

FIGURE C1-1; THE AD/AS MODEL

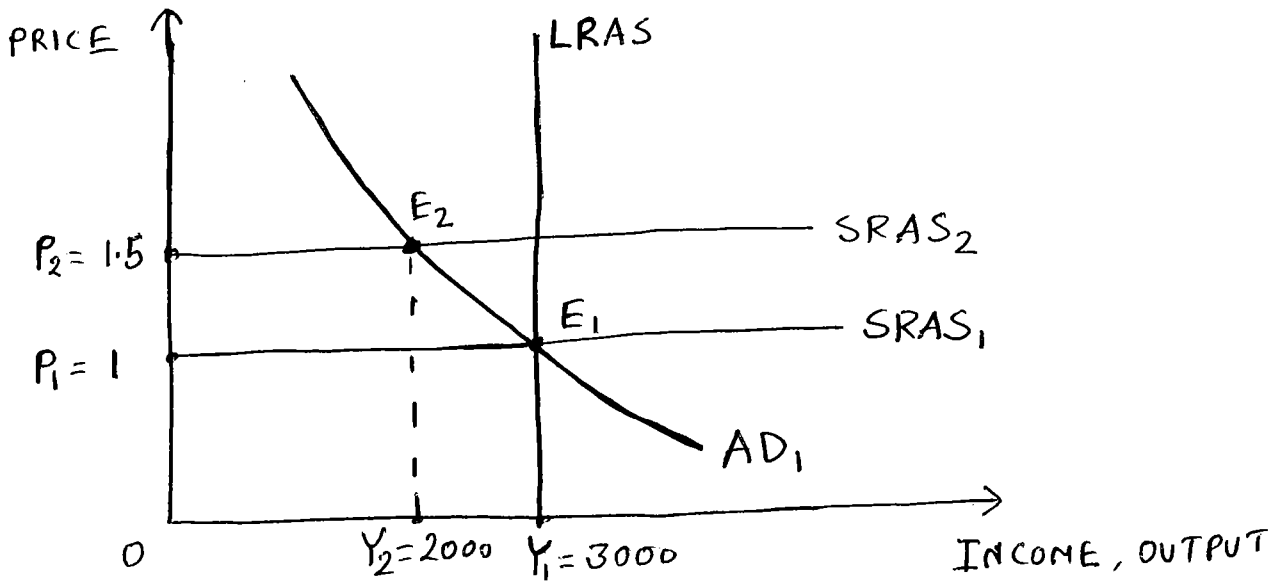


FIGURE C1-2; THE AD/AS MODEL

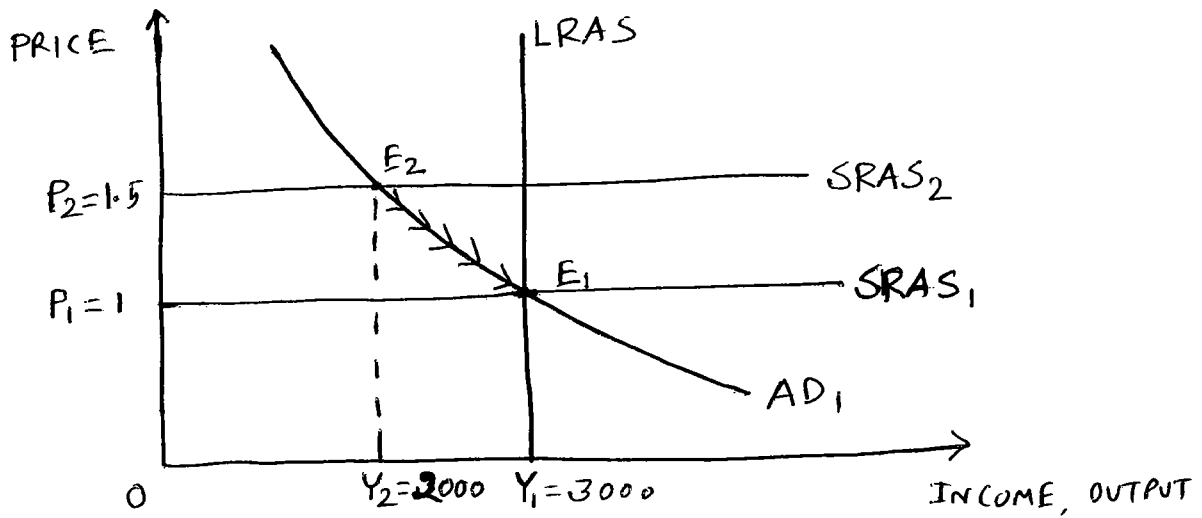


FIGURE C1-3; THE AD/AS MODEL

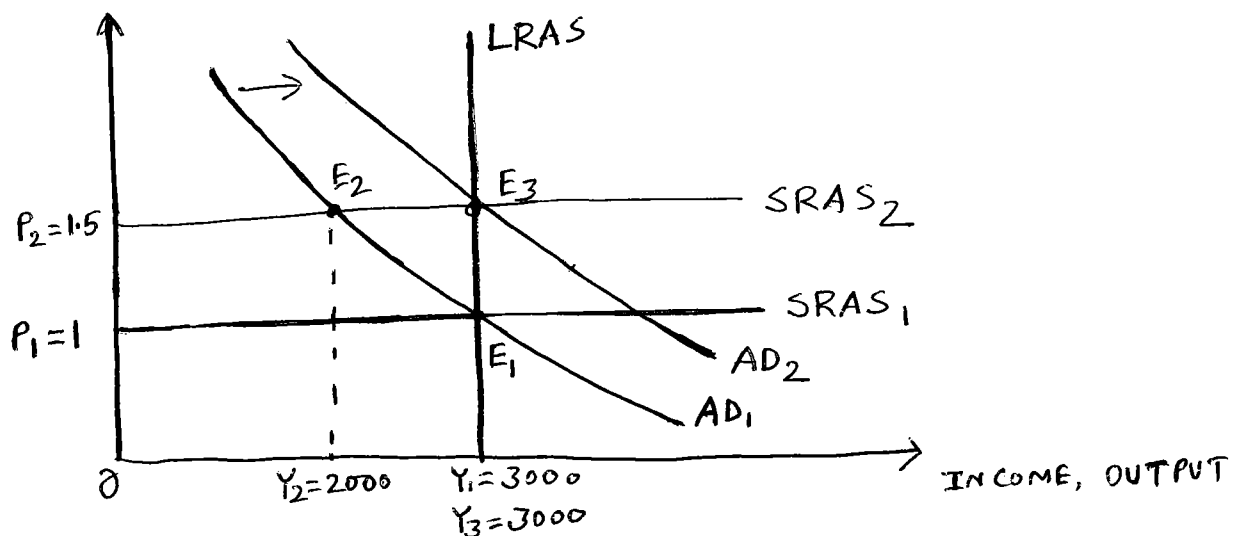


FIGURE C2-1 ; THE KEYNESIAN CROSS

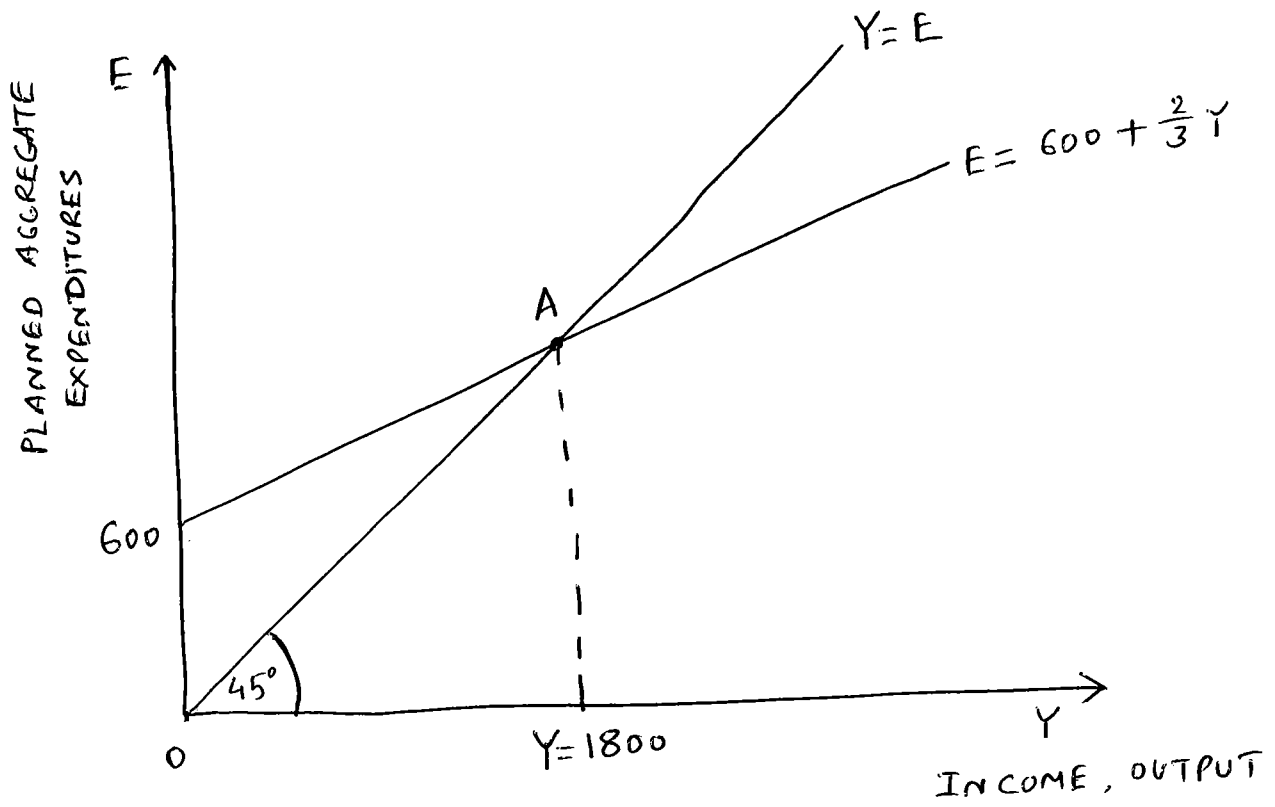


FIGURE C3-1: THE IS-LM MODEL

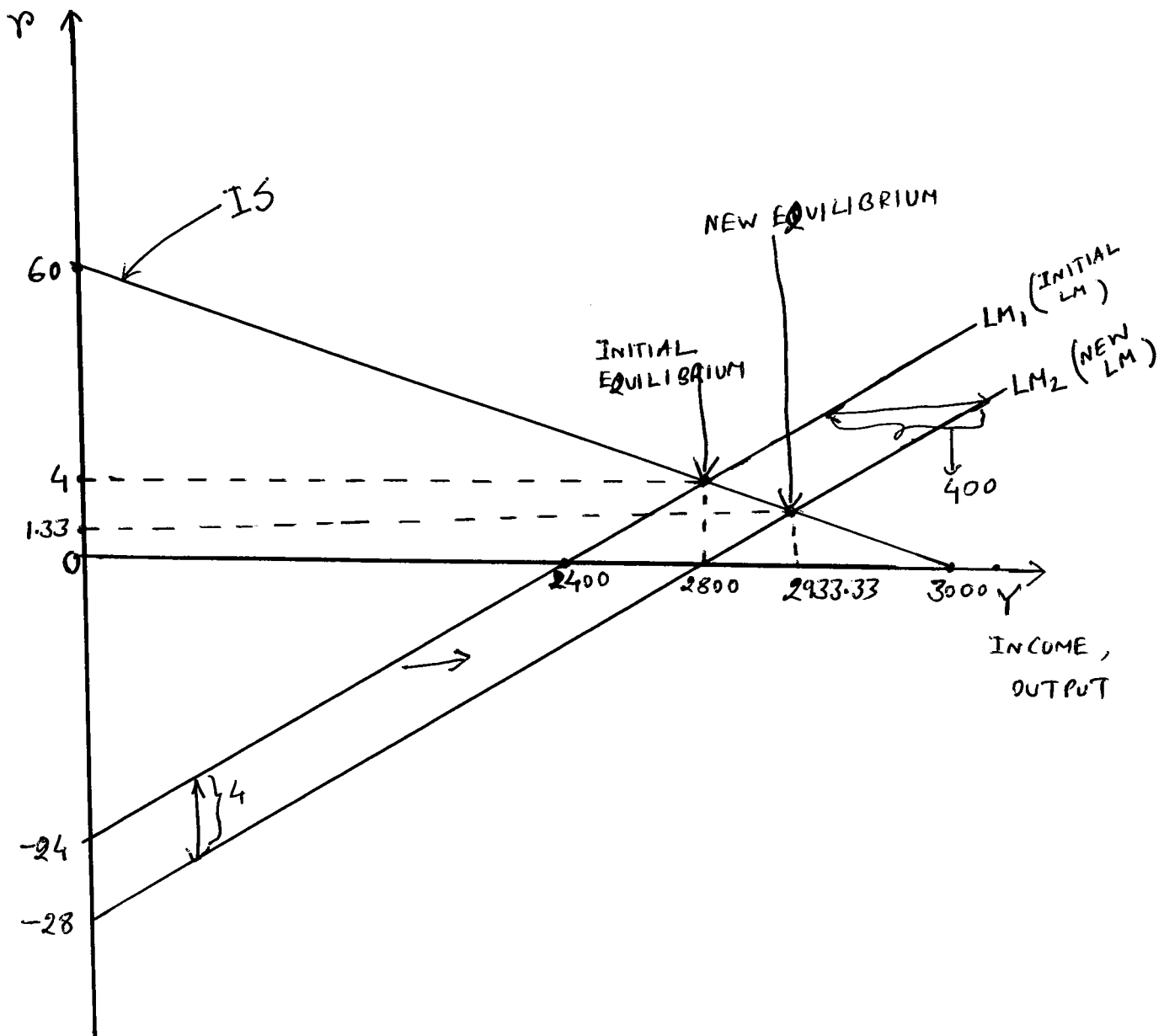


FIGURE C3-2 : THE AD CURVE

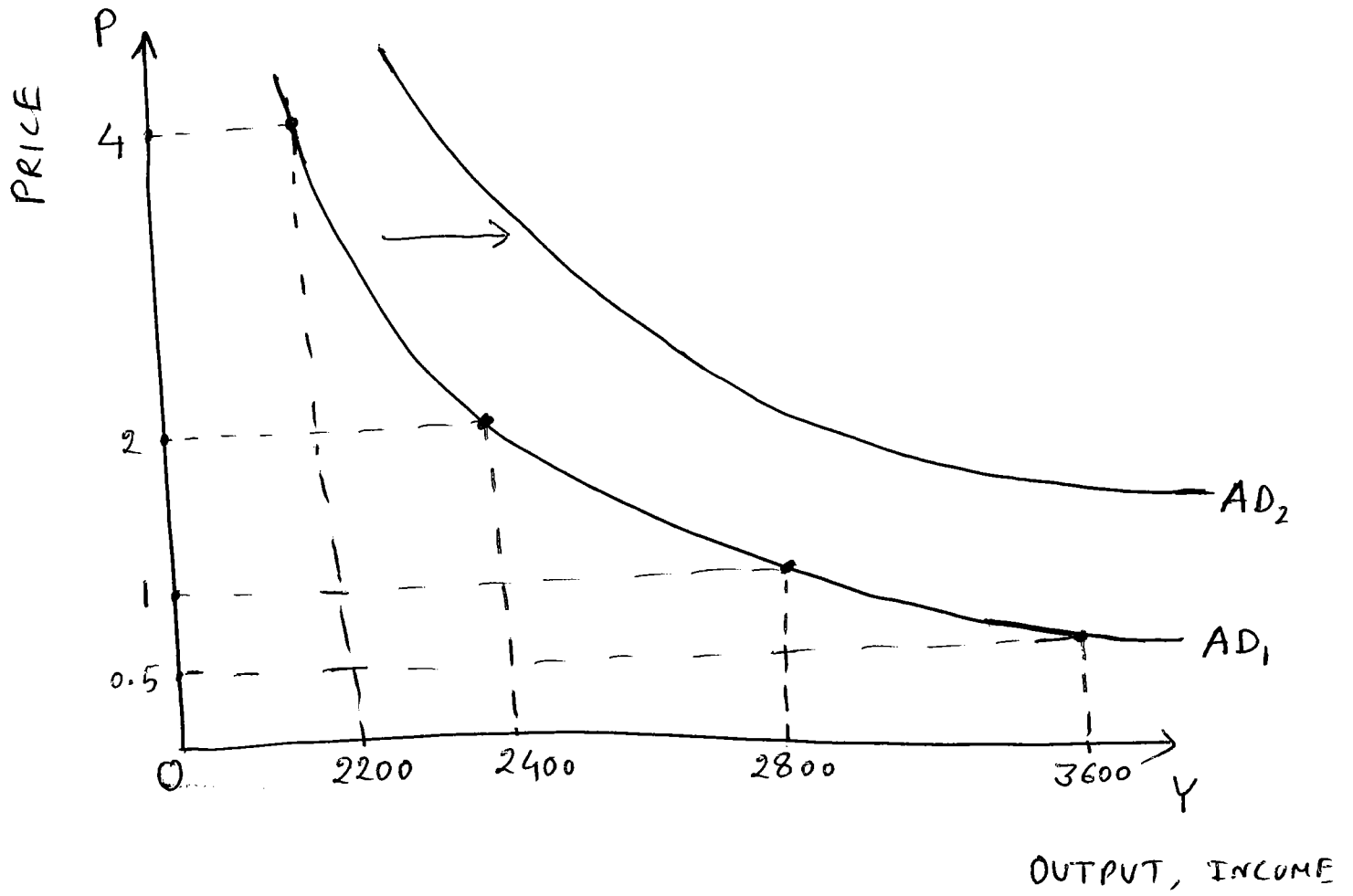


FIGURE C4-1: THE MUNDELL-FLEMING MODEL UNDER FLOATING EXCHANGE RATES

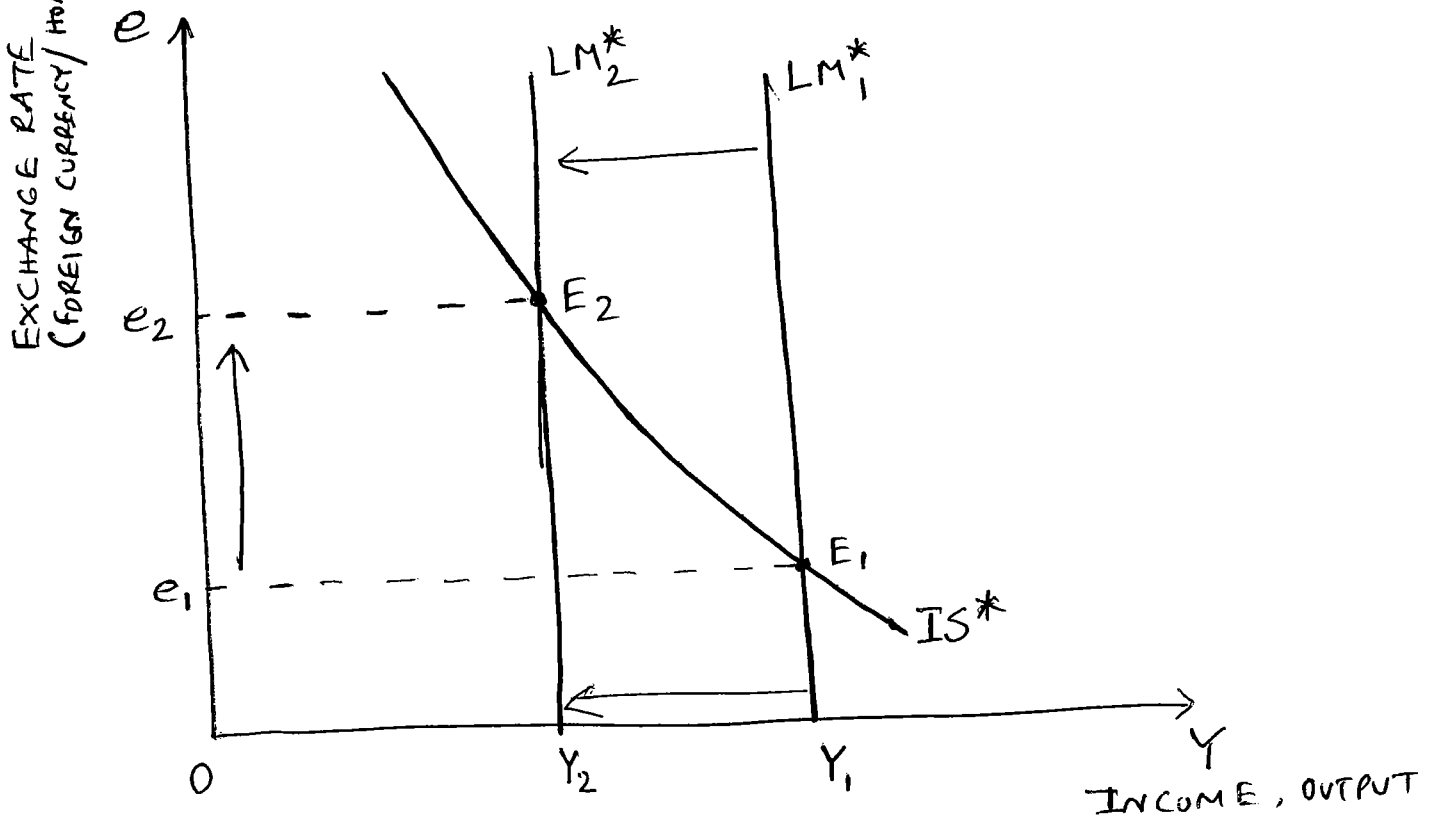


FIGURE C4-2: THE MUNDELL-FLEMING MODEL UNDER FIXED EXCHANGE RATES

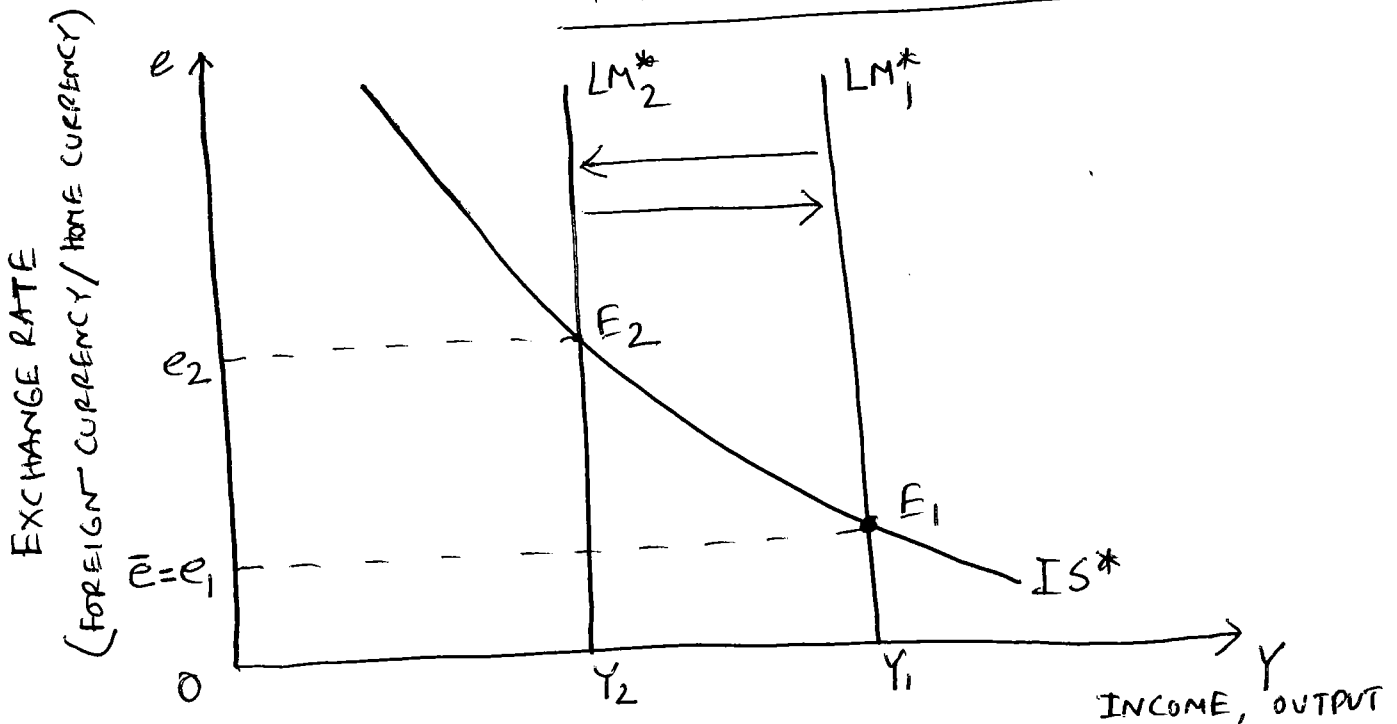


FIGURE C4-3: THE MUNDELL-FLEMING MODEL UNDER
FLOATING EXCHANGE RATES

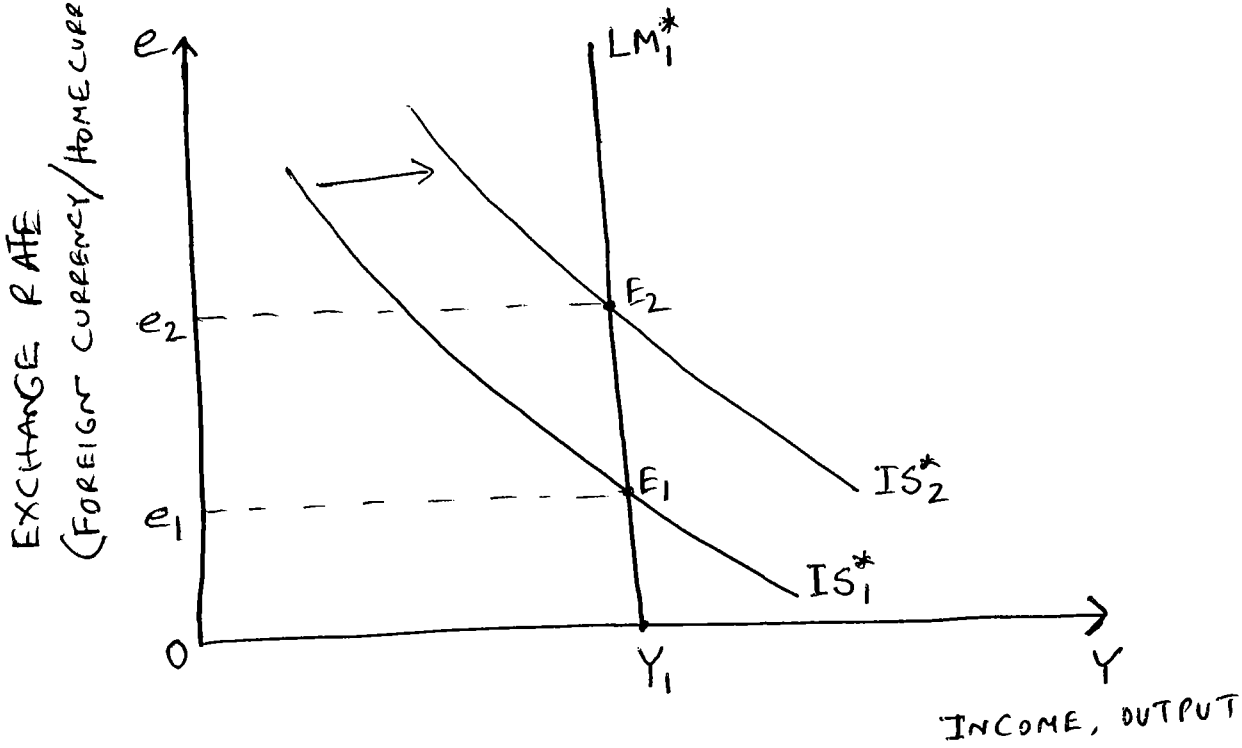


FIGURE C4-4: THE MUNDELL-FLEMING MODEL UNDER
FIXED EXCHANGE RATES

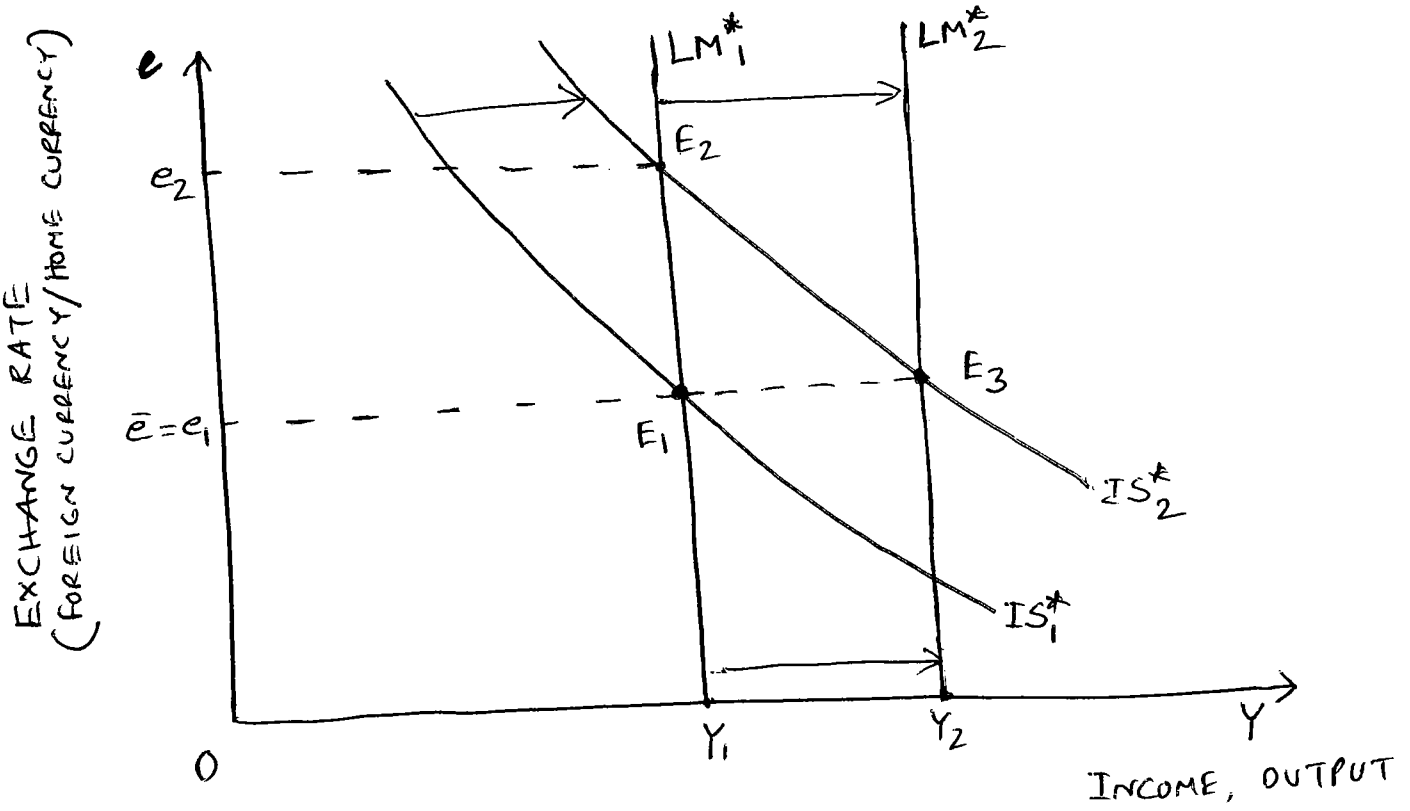


FIGURE C4-5: THE MUNDELL-FLEMING MODEL UNDER FLOATING EXCHANGE RATES

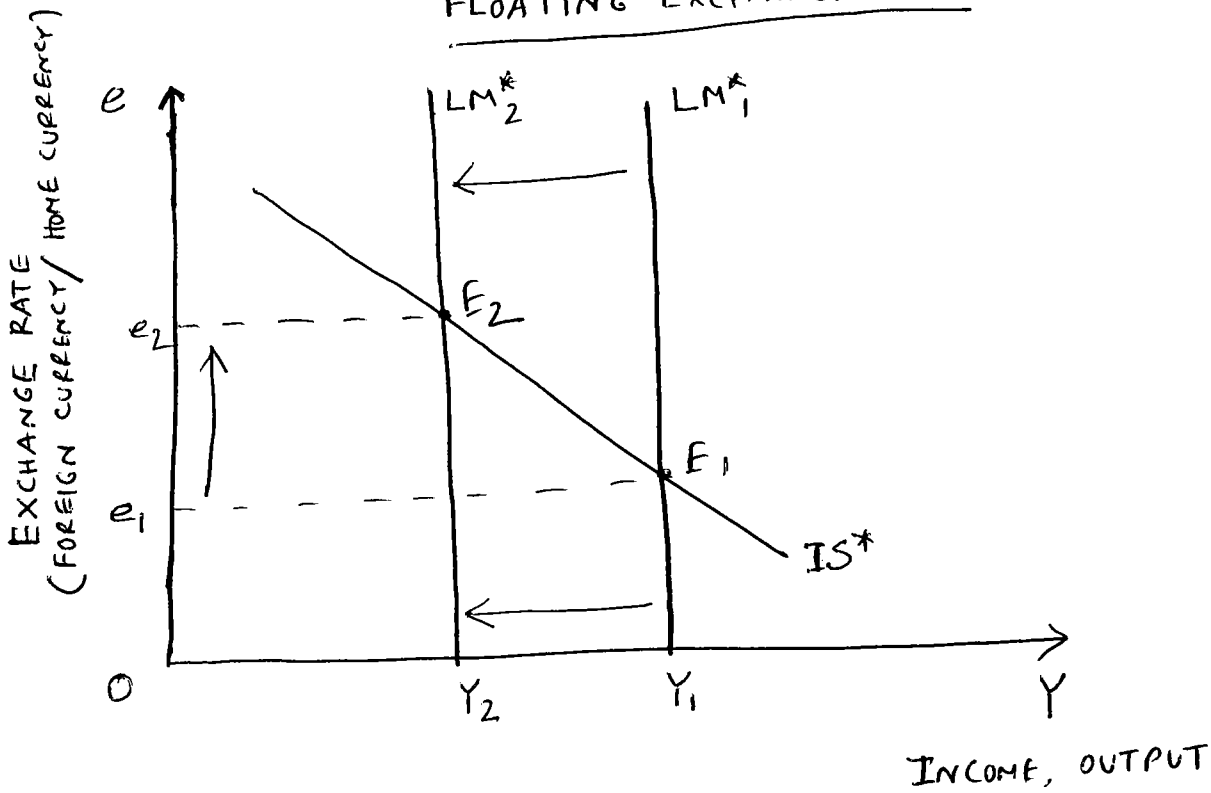


FIGURE C4-6: THE MUNDELL-FLEMING MODEL UNDER FIXED EXCHANGE RATES

